

Portable Power Station

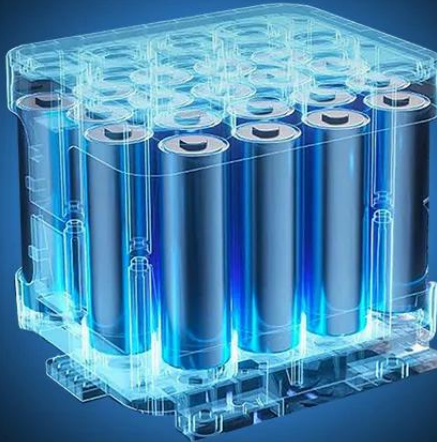
800W



512Wh
800W



3500+ Charging Cycles
LiFePo4 Battery Chemistry



AC Fast Charging,
0%-100% in
1.5 Hours

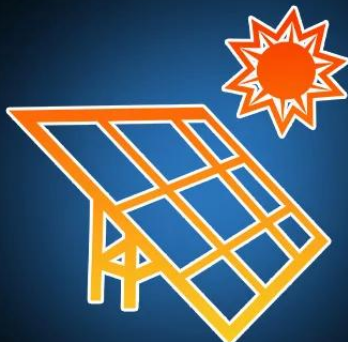


UPS

seamless Swichover
Time <10ms

UPS

200W Max
Solar Charging



8 Output Ports



Specifications



Model

MGSYB8001



Battery

LiFePo4 Battery



**Dimensions &
Weight**

276x209x230 mm
6.5 kg



USB Output

QC3.0 x2 (USB-A)
PD 20W x2 (Type-C)
PD 100W x1 (Type-C)



Car Output

12V/10A x1



AC Output

800W Max.



DC Output

DC12 6530V/10A



Capacity

512Wh



Battery Cycles

3500+



**AC Charging
Time**

1.5 Hours
(400W Input Power)



Input Power

AC Input:
400W Max.
XT60 Input:
200W Max.



**Charging
Modes**

AC Charging
Solar Charging
(MPPT) Car Charging



UPS Mode

Switchover Time
<10ms



**Working
Temperature**

-10°C - 45°C



Convenient to Use



Informative Display



Built-in LED Light



**Dust-resistant
Rubber Plug**



Fireproof Cover

LiFePO₄ Battery Chemistry

3500+ full charge and drain cycles.
Get 10 years of daily use until hitting 80%
of its original capacity.



Uninterrupted Power Supply

Switch over seamlessly in less than 10ms.
Safeguard your crucial electronics from
unexpected power outages.



Diverse Applications



Glamping Trips



Tent Camping



Power Tools



Backup Power