



# Portable Power Station

## 800W



**512Wh**  
**800W**



**3500+** Charging Cycles  
**LiFePo4 Battery Chemistry**



**AC Fast Charging,**  
**0%-100% in**  
**1.5 Hours**

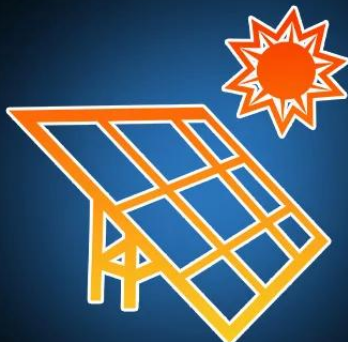


**UPS**

**seamless Swichover**  
**Time <10ms**

**UPS**

**200W Max**  
**Solar Charging**



**8 Output Ports**



# Specifications



**Model**

MGSYB8001



**Battery**

LiFePo4 Battery



**Dimensions & Weight**

276x209x230 mm  
6.5 kg



**USB Output**

QC3.0 x2 (USB-A)  
PD 20W x2 (Type-C)  
PD 100W x1 (Type-C)



**Car Output**

12V/10A x1



**AC Output**

800W Max.



**DC Output**

DC12 6530V/10A



**Capacity**

512Wh



**Battery Cycles**

3500+



**AC Charging Time**

1.5 Hours  
(400W Input Power)



**Input Power**

AC Input:  
400W Max.  
XT60 Input:  
200W Max.



**Charging Modes**

AC Charging  
Solar Charging  
(MPPT) Car Charging



**UPS Mode**

Switchover Time  
<10ms



**Working Temperature**

-10°C - 45°C



# Versatile Port Options



# Convenient to Use



**Informative Display**



**Built-in LED Light**



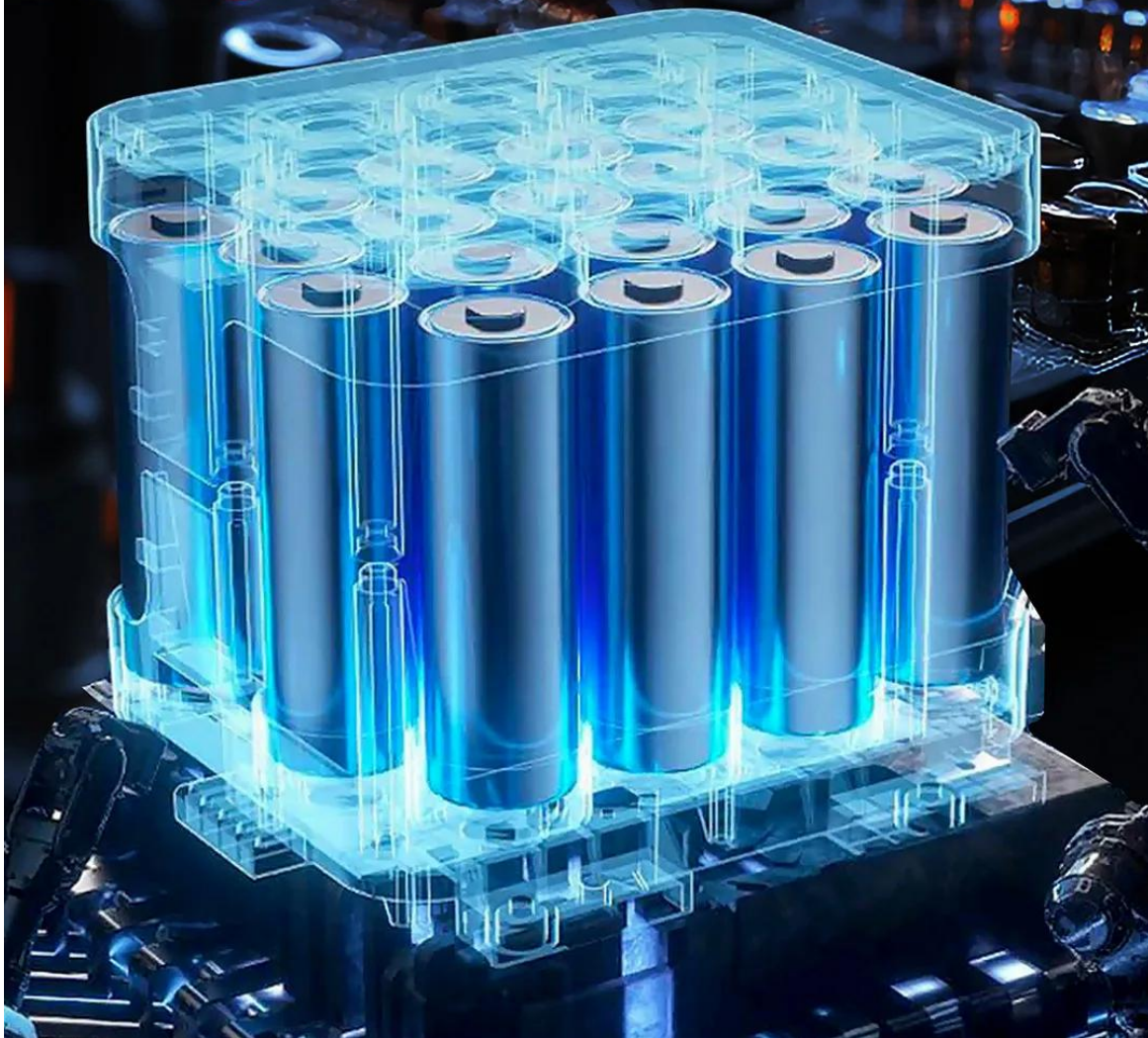
**Dust-resistant  
Rubber Plug**



**Fireproof Cover**

# LiFePO<sub>4</sub> Battery Chemistry

3500+ full charge and drain cycles.  
Get 10 years of daily use until hitting 80%  
of its original capacity.





# Uninterrupted Power Supply

Switch over seamlessly in less than 10ms.  
Safeguard your crucial electronics from  
unexpected power outages.





# Power Almost All Devices



**10.0** Times  
Drone (40Wh)



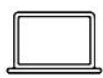
**10.3** Hours  
Mini Fridge (40W)



**3.6** Hours  
Heated Blankets (120W)



**54.4** Hours  
Lamp (8W)



**6.9** Times  
Laptop (58Wh)



**30.3** Times  
Camera (13Wh)



**11.7** Hours  
Fan (35W)



**30.7** Hours  
Wi-Fi Router (10W)



**32.9** Times  
Phone (12Wh)





# Diverse Applications



**Glamping Trips**



**Tent Camping**



**Power Tools**



**Backup Power**