

Designed for portable power stations and solar generators, this 2400W bi-directional inverter features a built-in MPPT and is compatible with 120V/230V AC input. Certified to EMC Class B standards, it boasts an original topology that delivers industry-leading power density and an impressive charging and discharging efficiency of up to 93%. The inverter supports OTA updates. Its multiple circuit protections contribute to a more stable operation of the energy storage system.

MEGMEET BI-DIRECTIONAL INVERTER 2400W

EMC TESTED & CERTIFIED 



APPLICATIONS

Portable Power Stations



Microinverters

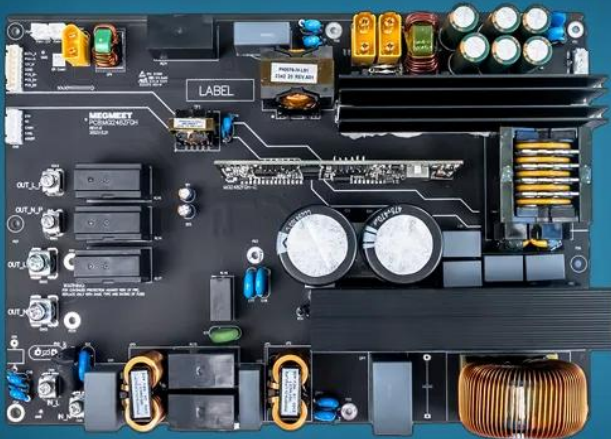


Hybrid Inverters

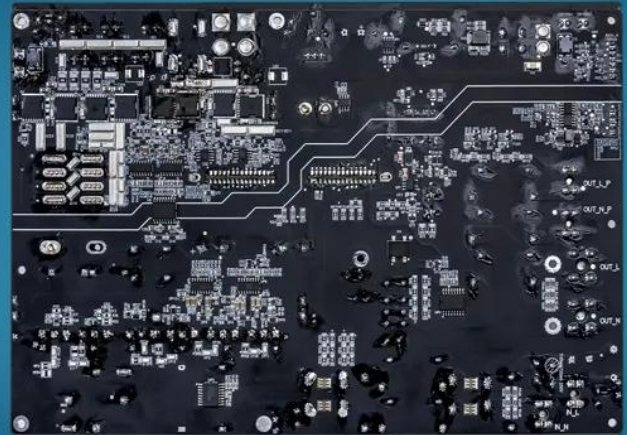


360° SHOWCASE

Top View



Back Side



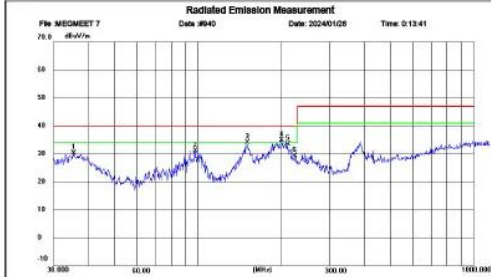
Detailed View



EMC Testing Reports



Shenzhen CTL Testing Technology Co., Ltd
Tel: +86-755-89486194



Site: LAB Chamber 1
Limit: EN55032 RE-Class B 30-1000MHz
EUT: /
MN: IQ355A
Mode: WORKING
Note: MEGMEET
20PV 另电400W+AC另电1000W

Polarization: Horizontal
Power: /
Distance: 3m
Temperature: 25(C)
Humidity: 50 %

No.	Frequency (MHz)	Reading (dBuV)	Factor (dBm)	Level (dBuV/m)	Limit (dBuV/m)	Margin (dB)	Detector	Height (cm)	Azimuth (deg.)	P/F	Remark
1	35.4992	12.58	17.68	30.26	40.00	9.74	peak	200	173	P	
2	98.1418	19.71	11.42	31.13	40.00	8.87	peak	200	13	P	
3	151.0665	17.14	17.05	34.19	40.00	5.81	peak	200	344	P	
4	201.3630	20.40	14.55	34.95	40.00	5.05	peak	200	2	P	
5	211.5264	19.29	14.27	33.56	40.00	6.44	peak	200	162	P	
6	224.5192	15.46	13.82	29.28	40.00	10.72	peak	200	151	P	

*Maximum data x:Over limit !over margin

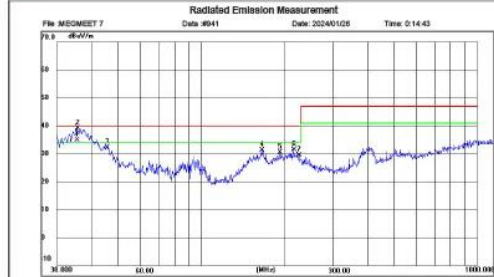
File: MEGMEET 7>Data: #940

Page: 1

Engineer Signature: PAN



Shenzhen CTL Testing Technology Co., Ltd
Tel: +86-755-89486194



Site: LAB Chamber 1
Limit: EN55032 RE-Class B 30-1000MHz
EUT: /
MN: IQ355A
Mode: WORKING
Note: MEGMEET
20PV 另电400W+AC另电1000W

Polarization: Vertical
Power: /
Distance: 3m
Temperature: 25(C)
Humidity: 50 %

No.	Frequency (MHz)	Reading (dBuV)	Factor (dBm)	Level (dBuV/m)	Limit (dBuV/m)	Margin (dB)	Detector	Height (cm)	Azimuth (deg.)	P/F	Remark
1	35.4990	17.19	17.68	34.87	40.00	5.13	QP	100	0	P	
2	35.6240	21.47	17.58	39.05	40.00	0.95	peak	100	37	P	
3	45.6553	20.09	12.30	32.39	40.00	7.61	peak	100	304	P	
4	166.0690	15.75	15.53	31.28	40.00	6.72	peak	100	240	P	
5	192.4186	16.63	13.80	30.43	40.00	9.57	peak	100	209	P	
6	216.0240	17.42	14.04	31.46	40.00	8.54	peak	100	112	P	
7	226.0994	15.67	13.80	29.47	40.00	10.53	peak	100	112	P	

*Maximum data x:Over limit !over margin

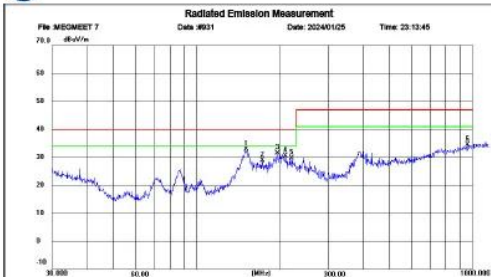
File: MEGMEET 7/Data: #941

Page: 1

Engineer Signature: PAN



Shenzhen CTL Testing Technology Co., Ltd
Tel: +86-755-89486194



Site: LAB Chamber 1
Limit: EN55032 RE-Class B 30-1000MHz
EUT: /
MN: IQ355A
Mode: WORKING
Note: MEGMEET
20AC另电1000W+AC1200W另电

Polarization: Horizontal
Power: /
Distance: 3m
Temperature: 25(C)
Humidity: 50 %

No.	Frequency (MHz)	Reading (dBuV)	Factor (dBm)	Level (dBuV/m)	Limit (dBuV/m)	Margin (dB)	Detector	Height (cm)	Azimuth (deg.)	P/F	Remark
1	151.0665	15.81	17.05	32.86	40.00	7.14	peak	200	354	P	
2	173.2050	13.92	14.95	28.87	40.00	11.13	peak	200	343	P	
3	195.6219	17.17	14.24	31.41	40.00	8.59	peak	200	354	P	
4	210.0481	16.10	14.34	30.44	40.00	9.56	peak	200	312	P	
5	220.6171	15.83	13.96	29.79	40.00	10.21	peak	200	354	P	
6	958.7943	6.47	28.01	34.48	47.00	12.52	peak	200	141	P	

*Maximum data x:Over limit !over margin

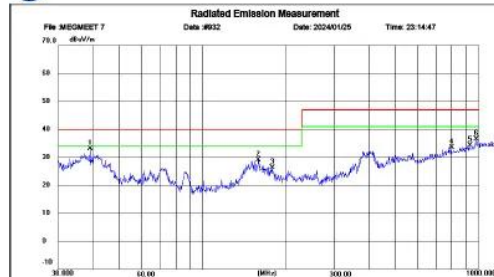
File: MEGMEET 7/Data: #931

Page: 1

Engineer Signature: PAN



Shenzhen CTL Testing Technology Co., Ltd
Tel: +86-755-89486194



Site: LAB Chamber 1
Limit: EN55032 RE-Class B 30-1000MHz
EUT: /
MN: IQ355A
Mode: WORKING
Note: MEGMEET
20AC另电1000W+AC1200W另电

Polarization: Vertical
Power: /
Distance: 3m
Temperature: 25(C)
Humidity: 50 %

No.	Frequency (MHz)	Reading (dBuV)	Factor (dBm)	Level (dBuV/m)	Limit (dBuV/m)	Margin (dB)	Detector	Height (cm)	Azimuth (deg.)	P/F	Remark
1	39.1616	16.95	16.18	33.13	40.00	6.87	peak	100	6	P	
2	159.7644	13.14	15.94	29.08	40.00	10.92	peak	100	208	P	
3	178.7584	11.86	14.51	26.37	40.00	13.63	peak	100	282	P	
4	798.9797	7.16	26.30	33.46	47.00	13.54	peak	100	208	P	
5	929.0082	6.63	27.73	34.36	47.00	12.64	peak	100	155	P	
6	982.6200	7.97	28.45	36.42	47.00	10.58	peak	100	27	P	

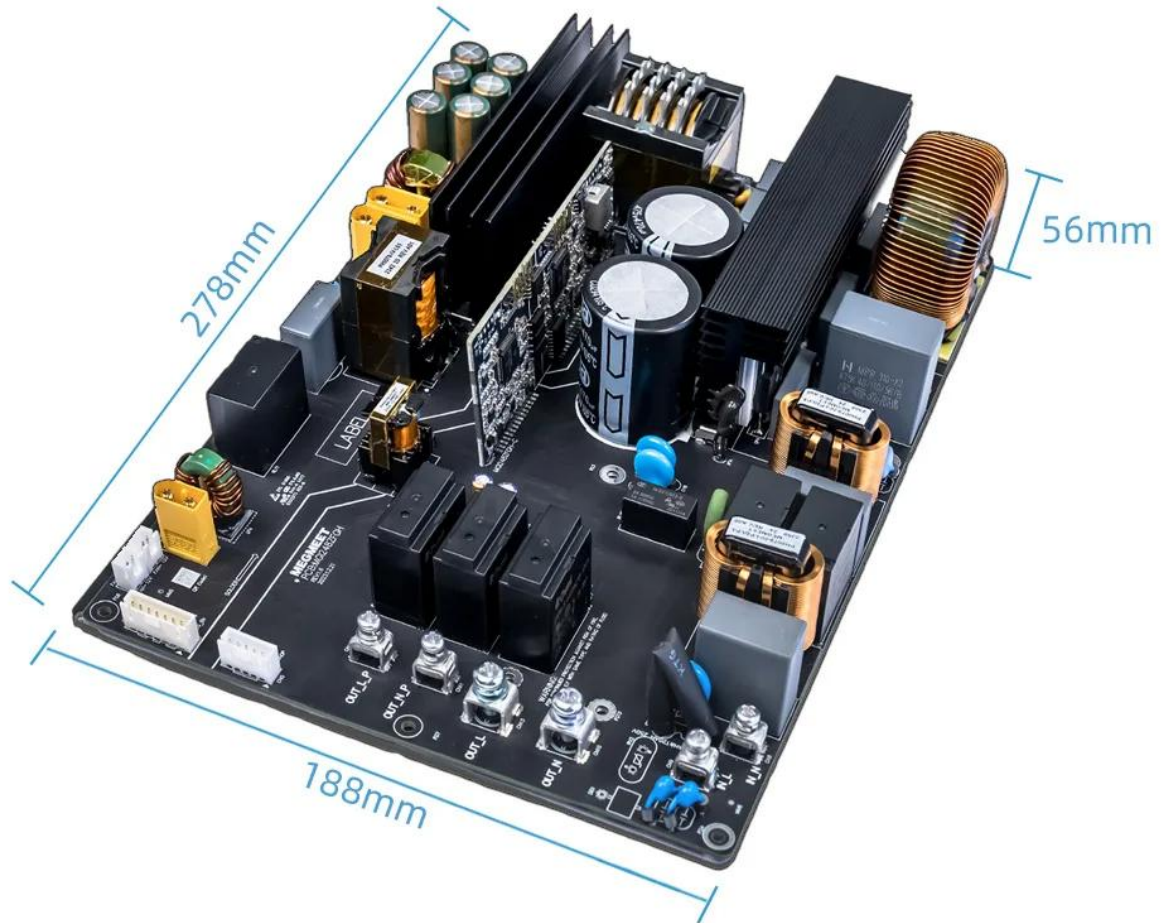
*Maximum data x:Over limit !over margin

File: MEGMEET 7/Data: #932

Page: 1

Engineer Signature: PAN

DIMENSIONS





	11 R&D Centers
	8 Production Plants
	2400+ R&D Engineers
	6800+ Employees
	1500+ Patents

Shenzhen Megmeet Electrical Co., Ltd. is a high-tech company that focuses on power electronics and industrial control technology and is engaged in the R&D, production, sales and services of hardware, software and system solutions in the field of electrical automation.

Harnessing 20 years of expertise, Megmeet ventured into portable power stations in 2021. Our aim is to become the leading solution provider for renewable energy products, including advanced inverters, control boards, portable power stations, and ESS.

OEM/ODM Services



Global Shipment



FAQ

Sample Policy

If the sample is readily available in our inventory, we can dispatch it immediately. However, if it's not in stock, we would require approximately 30 to 35 days to produce a new one. Please note that the customer will be responsible for covering the costs associated with the sample and its shipment.

OEM/ODM Policy

We offer specialized services for OEM & ODM. Customization options are available for the brand name, color, and design. Please note that a minimum order quantity (MOQ) is required for all orders.

Certificates

We have obtained CE, FCC, UL, and PSE certifications for portable power stations, ensuring compliance with import requirements in most countries. However, for certifications in Taiwan and Korea, customers will need to secure these under their own company name.

Delivery Time

The time it takes to deliver our products can vary depending on the destination country. However, on average, you can expect a delivery time of approximately 1 month.

For the shipment of large-capacity batteries, we have established long-term partnerships with forwarders who specialize in this area.

Warranty

All our products come with a 1-year warranty. In case of common issues, we will provide detailed maintenance instructions and promptly ship the necessary spare parts. Customers can follow our instructions to repair and replace parts on their own. If the issue persists and cannot be resolved within the warranty period, our company will supply a new replacement.

After-sales Services

We offer lifetime technical support online via WhatsApp, WeChat, Facebook, LinkedIn and Email. Should you encounter any issues after delivery, we are available for video calls at any time to assist you.

Certificates



Global Partners



Exhibitions



Testing Centers



EMS Test Room



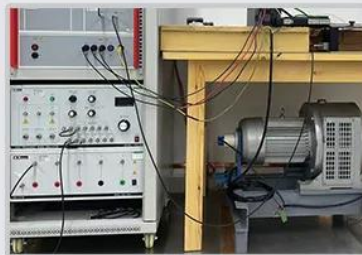
EMI Test Room



Electrical & Electronics
Test Room



Aging Test Room



Surge Test Room



Humidity & Temperature
Test Room



Environmental Test Room



Drop Test Room



Salt Spray Test Room

Why Choose MEGMEET



Lower Costs



On-Time Delivery



Consistent Quality



Quality Assurance Procedures



ISO 9001 Certification

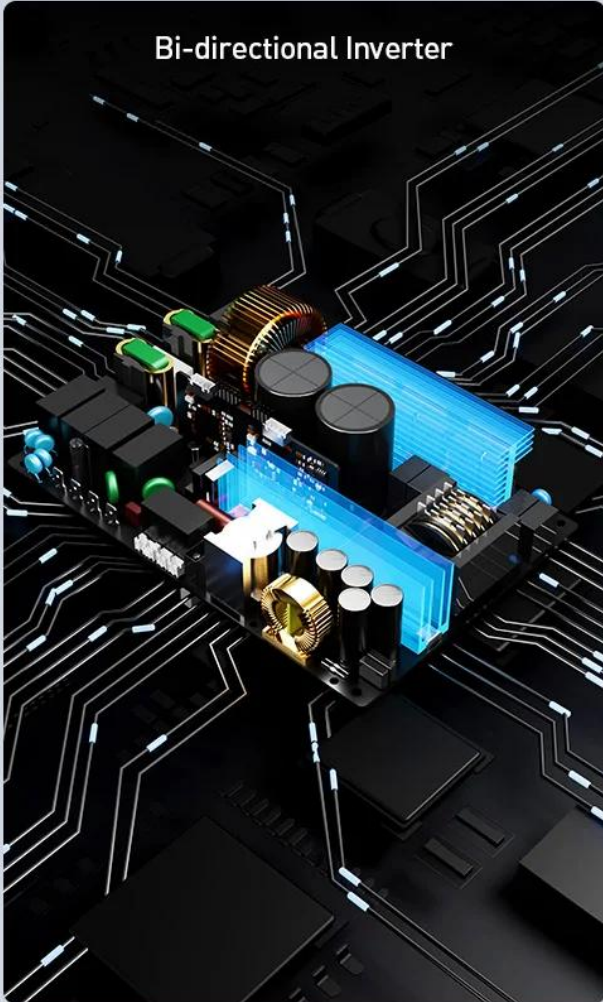


7x24 Tech Support

Core Inverter & Battery Technologies

Global Top 7 OEM Power Supply Manufacturer
with 20+ Years of Expertise

Bi-directional Inverter



Battery Management System



Tier 1 Lithium Batteries



Production Lines



SMT Production Line



Power Supply
Production Line



Function Testing



Assembly Line



Aging Testing



Visual Inspection

Certificates



Global Partners



Exhibitions

