

Grade A battery Cell: Megmeet 51.2V 100Ah LiFePO4 Battery Manufactured with automotive grade battery cells. High quality battery cells make LiFePO4 battery to provides 6000+deep cycles and up to 15- year life time.

Intelligent BMS: megmeet 51.2V 100Ah Battery's Battery Management System can manage and monitor cells information including voltage, current and temperature, protects it from overcharge, deep discharge, overloading, overheating and short circuit, help to extend lifetime.

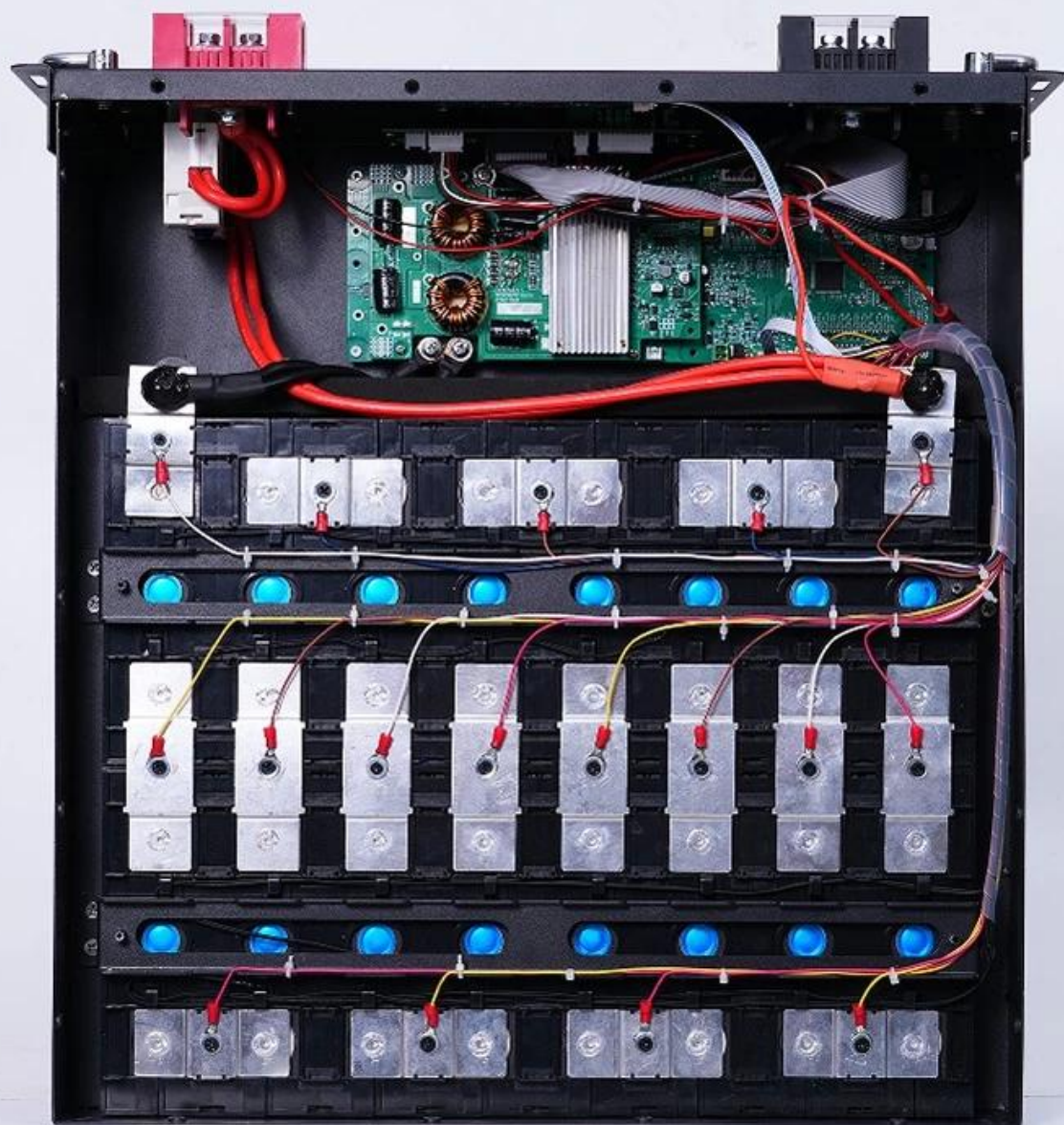
Compatible: CAN/RS485/RS232 Communication Protocol Lithium Ion Battery can be compatible with most inverters in the market, such as Growatt, Deye, SunGoldPower, Luxpower, Victron energy, Schneider, Phocos, SMK and so on.



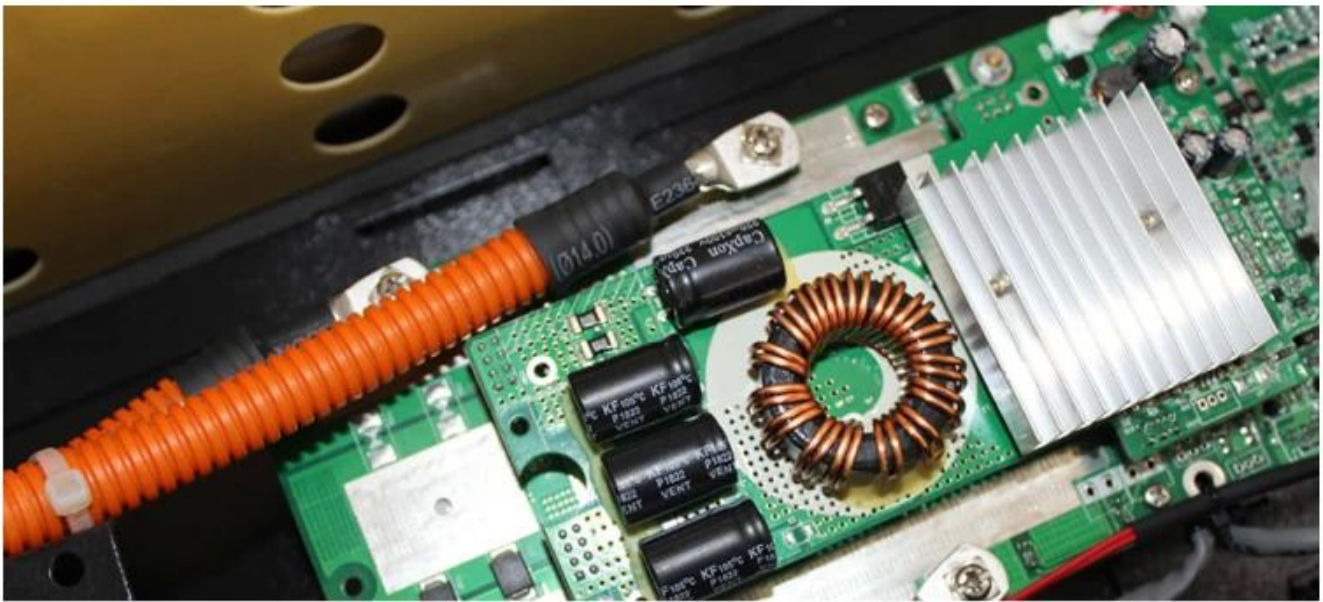








Multiple Protection Smart BMS For Safe Operation



- Overcharge protection function
- Over current protection function
- Temperature protection function

- Overdischarge protection function
- Short circuit protection function
- Cell balance function

Built-in BMS Protection



Overcharge
protection



Overdischarge
protection



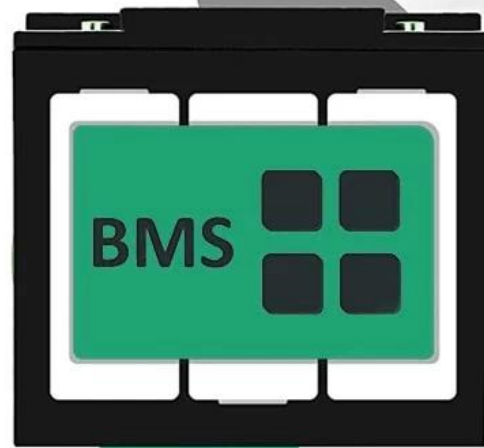
Overcurrent
protection



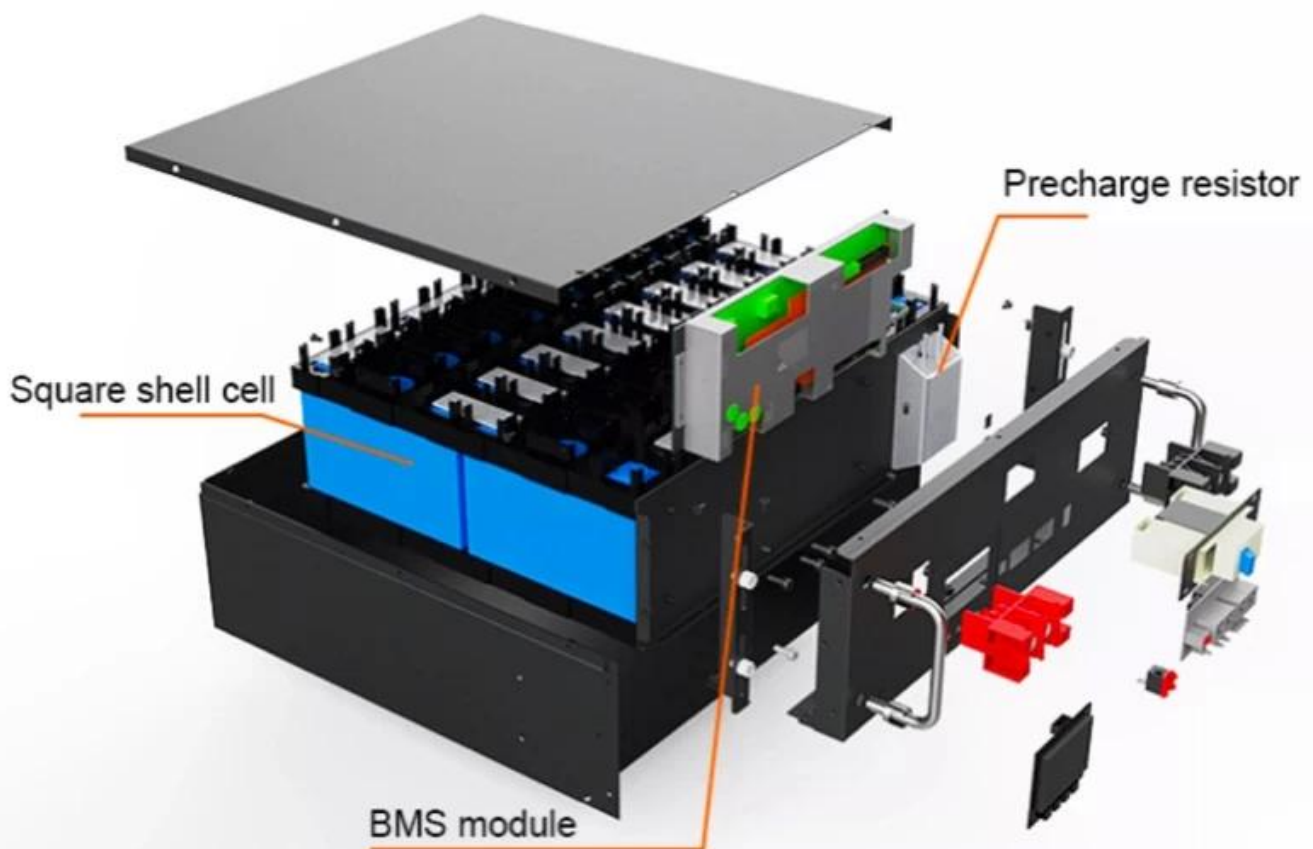
Short circuit
protection



Cell voltage
self balance



BMS PROTECTION



LiFePO4 Battery Module

BUILT-SMART BMS



Overcharge
Protection



Over discharge
Protection



Short Circuit
Protection



High/Low
Temp Protection



Overcurrent
Protection



Equalizing
Voltage

BMS



Product Technical Specification Parameters

	Items	Parameters	Noted
Performance	Battery Voltage	51.2V	16S
	Battery Capacity	100Ah	0.5C
	Charging Cut-Off Voltage	58.4V	Single Cell 3.65V
	Discharging Cut-Off Voltage	40V	Single Cell 2.5V-Adjustable
	Charging Current	100A	Maximum Current-200A
	Discharging Current	100A	Continuous Working Current
	Internal Resistance	≤25mΩ	
Protections	Over -Charging Voltage Protection	58.4V	Settable
	Over-Discharging Voltage Protection	40V	Settable
	Charging Over-Current Protection	100A	Settable
	Short Circuit Protection	YES	Remove load or charging can be lifted
	BMS Temperature Protection	-25°C~70°C	Electricity and ambient temperature protection

Use Environment	Working Temperature	-10°C~60°C	
	Storage And Shipping Temperature	-20°C~55°C	
	Relative Humidity	95%	
	Atmospheric Pressure	70kPa-106kPa	
Dimensions	Weight	39.5±3%Kg	Net weight
	Weight	50.5±3% Kg	Gross Weight
	Size	483x460x140±3mm	Not including Install a baffle
	Size	590x565x360±3mm	out packing size